

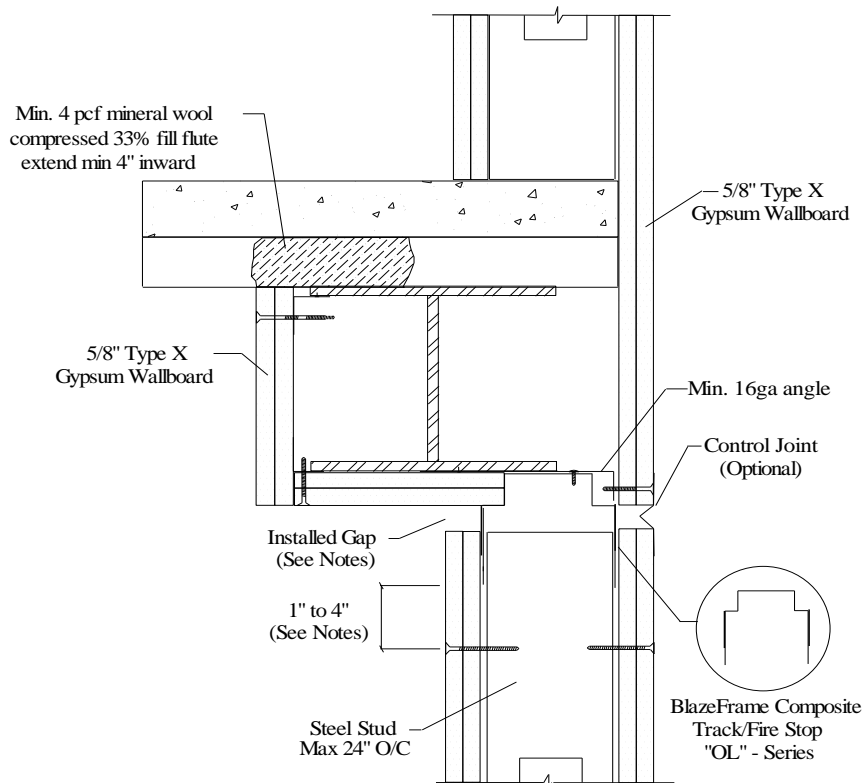
# Assembly Details Non-Rated Substrate



## NRS17 - Offset under Non-Rated Structural Support Stair Shaft

**Joint Movement Capabilities (MC) / Profile**  
**Certified Level III (seismic) Cyclical and Lowest L-rating (smoke/air leakage)**

**3/4" MC** - ("Stock Series")      **1" MC** - ("W" Series)      **1 1/2" MC** - ("X" Series)  
**2" MC** - ("Z" Series)      **3" MC** - ("Y" Series)



1. Installed Gap (compression only) = movement capability (MC) of profile
2. Installed Gap (compress + extension) = 1/2 movement capability (MC) of profile
3. Attach to substrate with approved fastener max 24" O.C or per E.O.R.
4. Min. 20ga angle attach to beam or overhead substrate with typical steel fasteners
  - vertical framing installed at gypsum board edges
  - span between beam flanges greater than 24" add vertical stud framing a max 24" O/C
5. Drywall fasteners 1" to 4" below BlazeFrame to accommodate MC

### **UL, ASTM & Code Standards**

UL2079, E814, E1966, ULC S115-M95  
A1003, A653, A924, C645, C754, C955  
AISI 2004 NAS  
2006 & 2009 IBC  
2007 CBC

### **Lead Points**

MR 2.1 & 2.2 - Construction Waste: up to 2 pts  
MR 4.1 & 4.2 - Recycled Content : up to 2 pts  
MR 5.1 & 5.2 - Regional Proximity  
EQ 4.1 - Low Emitting Materials  
EQ 9 - Enhanced Acoustical

Phone: (425) 869-2811 Fax: (425) 869-2300