

Flat Concrete Substrate

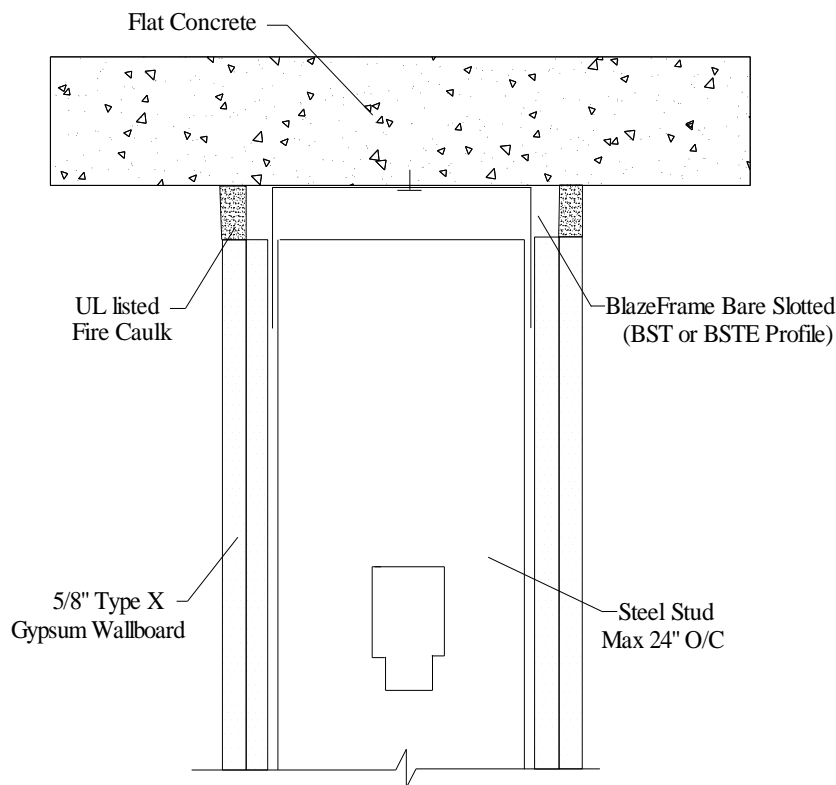


PT8 - "Bare Slotted" Concrete Overhead with Caulk

Joint Movement Capabilities (MC) / Profile Series refer to UL Listing: [HW-D-0632](#)

1/2" MC - (BST) (BSTE)

Caulk - A/D Fire EGS Nelson Hilti STI Tremco USG Rectorseal



1. Max Installed Gap = 1"
2. Movement Capability = 25% of applied caulk material
3. Attach to substrate with approved fastener max 24" O.C or per E.O.R.
4. Do not screw drywall or stud to BlazeFrame solid leg profile studs "free float"
5. "Slotted" profile fasten metal framing fastener in center of slot (min. one side)
6. Drywall fasteners 1" to 4" below BlazeFrame to accommodate MC

UL, ASTM & Code Standards

UL2079, E814, E1966, ULC S115-M95
A1003, A653, A924, C645, C754, C955
AISI 2004 NAS
2006 & 2009 IBC
2007 CBC

Leed Points

MR 2.1 & 2.2 - Construction Waste: up to 2 pts
MR 4.1 & 4.2 - Recycled Content : up to 2 pts
MR 5.1 & 5.2 - Regional Proximity
EQ 4.1 - Low Emitting Materials
EQ 9 - Enhanced Acoustical

Phone: (425) 869-2811 Fax: (425) 869-2300