

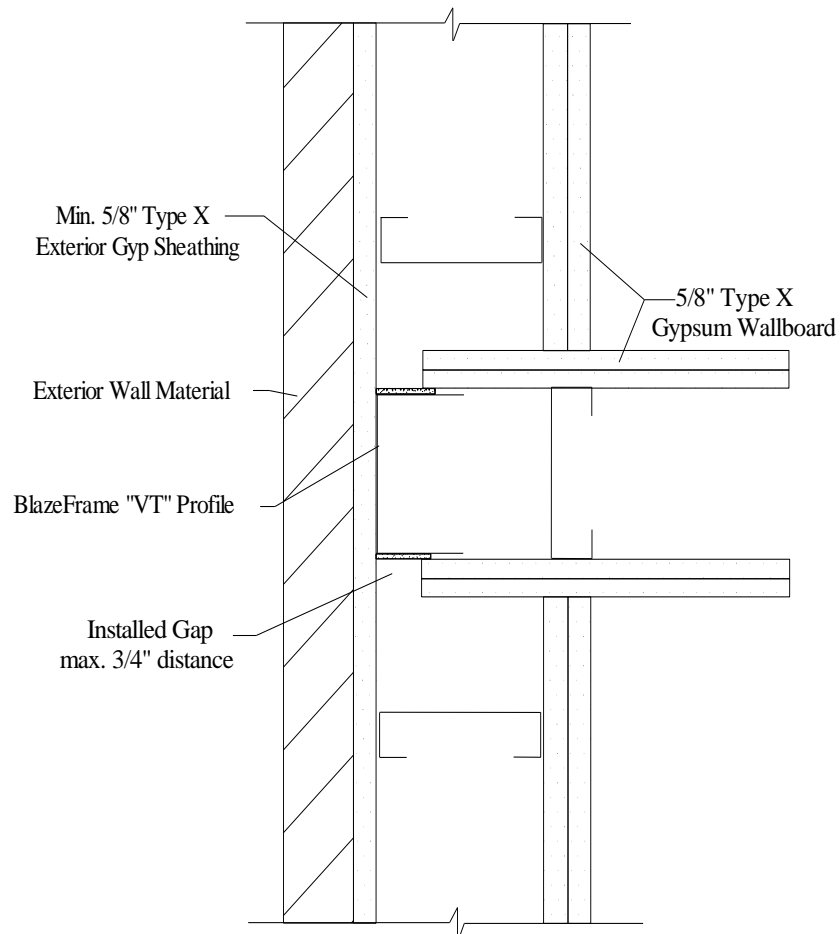
Vertical & Miscellaneous



VM23 - Wall to Wall (Gypsum to Exterior Gypsum Substrate)

Joint Protection (JP) / Profile Series design based on UL Listing: [WW-S-0055](#) & [HW-D-0503](#)

3/4" JP - (Stock Series)



1. Installed Gap = joint protection (JP) of profile
2. Attach BlazeFrame VT profile (web in contact with exterior sheathing) to top and bottom track of exterior wall
3. Drywall installed per U400 or V400 UL certified wall designs

UL, ASTM & Code Standards

UL2079, E814, E1966, ULC S115-M95
A1003, A653, A924, C645, C754, C955
AISI 2004 NAS
2006 & 2009 IBC
2007 CBC

Leed Points

MR 2.1 & 2.2 - Construction Waste: up to 2 pts
MR 4.1 & 4.2 - Recycled Content : up to 2 pts
MR 5.1 & 5.2 - Regional Proximity
EQ 4.1 - Low Emitting Materials
EQ 9 - Enhanced Acoustical

Phone: (425) 869-2811 Fax: (425) 869-2300